



2.5.1. Mechanism of internal/ external assessment is transparent and the grievance redressal system is time- bound and efficient

The internal assessment process is as per the formative and summative evaluation approaches to measure student achievement. It is as follows:

Formative Approaches: Attendance, record, classroom interactions, assignments, project work, field visit, and laboratory sessions.

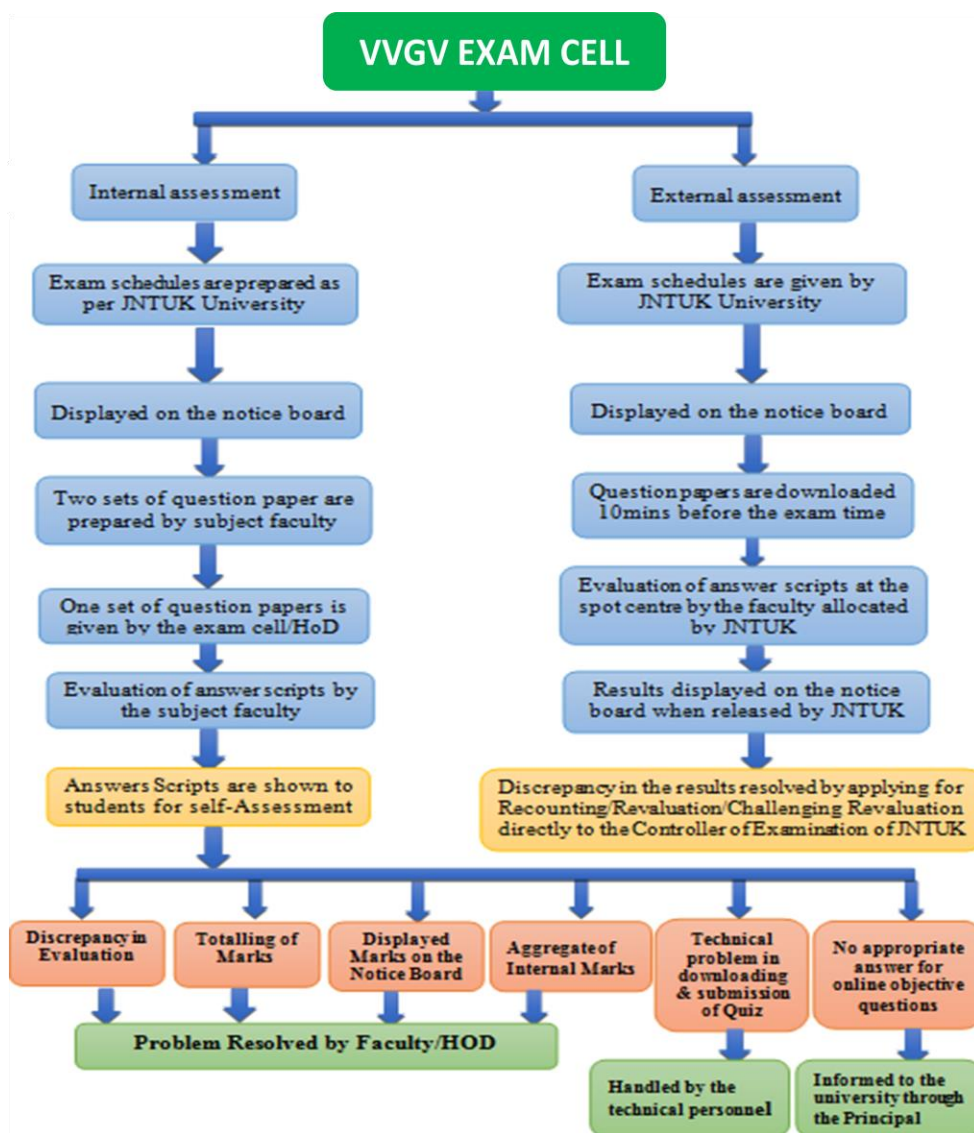
Summative Approaches: Two Mid-term Exams

The mid-term exam schedule is given by the university and is communicated to the students well in advance. To ensure proper conduct of mid-term exams, two sets of internal mid-term question papers are prepared in accordance with Bloom's Taxonomy by the subject faculty along with the scheme of valuation and a solution key. Questions are mapped with the course outcomes.

The course coordinator analyzes the quality of the question papers and necessary changes are done, if needed. After this process, the question papers along with the scheme and key are submitted to the HoD and then are sent to the college examination cell by the department examination cell. One of the two sets of internal question papers is selected by the college examination cell/HoD and is sent to the department examination cell on the day of the examination.

Evaluation is done by the course handling faculty members within three days from the date of examination. The corrected answer scripts at random are verified by the HoD to ensure the standard evaluation process. The corrected answer scripts are distributed to students for self verification and if any grievance is raised, it is addressed immediately. The Assignments along with the submission date are given to students by the respective faculty members in such a fashion that they have to solve the problem themselves by self-learning methods. Online examination with 20 multiple choice questions is conducted on the same day of the descriptive exam by the university as per the schedule. The marks obtained by students in the internal assessment tests are displayed on the department notice board. These marks are uploaded periodically on the university web portal along with their attendance.

Internal Practical examinations are held once in a semester. Internal faculties evaluate the answer scripts based on viva-voce, observation books and records and program outputs. The faculty maps the questions with course outcomes and Bloom's Taxonomy is applied for both assignment questions and experiments given in the practical examination.



External Assessment: External examinations are conducted by the University. Students give their external university exams in the Jumbling centers allotted by the university within 30 Km from the college. After the completion of exams, the university calls the faculty concerned to the spot Evaluation Centers and there the papers are evaluated with the scheme and key provided by the Chief. The results are announced through the university portal which are downloaded by the exam cell and are made available to the students in VVGV Results website.

If the students are not satisfied with their result, they can apply for Recounting/ Revaluation/ Challenging Revaluation directly to the Controller of Examination of JNTUK University.